

Upínač Weldon s chladicími

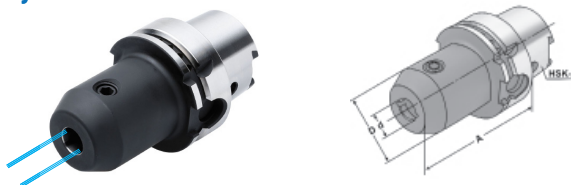


kanály pro upínací stopky

End mill holders with coolant channels

Upínač Weldon DIN 6359 pro upínací stopky DIN 1835-B

For mounting straight-shank tools with lateral flat according to DIN 1835 form B (Weldon).



Název Catalog number	Kužel Taper	d	D	A	G 2,5 25.000 min ⁻¹
HSK63A.65.WK.06	HSK63A	6	25	65	•
HSK63A.65.WK.08	HSK63A	8	28	65	•
HSK63A.65.WK.10	HSK63A	10	35	65	•
HSK63A.80.WK.12	HSK63A	12	42	80	•
HSK63A.80.WK.14	HSK63A	14	44	80	•
HSK63A.80.WK.16	HSK63A	16	48	80	•
HSK63A.80.WK.18	HSK63A	18	50	80	•
HSK63A.80.WK.20	HSK63A	20	52	80	•
HSK63A.110.WK.25	HSK63A	25	65	110	•
HSK63A.110.WK.32	HSK63A	32	72	110	•
HSK63A.125.WK.40	HSK63A	40	80	125	•
HSK63A.100.WK.06	HSK63A	6	25	100	•
HSK63A.100.WK.08	HSK63A	8	28	100	•
HSK63A.100.WK.10	HSK63A	10	35	100	•
HSK63A.100.WK.12	HSK63A	12	42	100	•
HSK63A.100.WK.14	HSK63A	14	44	100	•
HSK63A.100.WK.16	HSK63A	16	48	100	•
HSK63A.100.WK.18	HSK63A	18	50	100	•
HSK63A.100.WK.20	HSK63A	20	52	100	•
HSK63A.130.WK.06	HSK63A	6	25	130	•
HSK63A.130.WK.08	HSK63A	8	28	130	•
HSK63A.130.WK.10	HSK63A	10	35	130	•
HSK63A.130.WK.12	HSK63A	12	42	130	•
HSK63A.130.WK.14	HSK63A	14	44	130	•
HSK63A.130.WK.16	HSK63A	16	48	130	•
HSK63A.130.WK.18	HSK63A	18	50	130	•
HSK63A.130.WK.20	HSK63A	20	52	130	•
HSK100A.80.WK.06	HSK100A	6	25	80	•
HSK100A.80.WK.08	HSK100A	8	28	80	•
HSK100A.80.WK.10	HSK100A	10	35	80	•
HSK100A.80.WK.12	HSK100A	12	42	80	•
HSK100A.80.WK.14	HSK100A	14	44	80	•
HSK100A.100.WK.16	HSK100A	16	48	100	•
HSK100A.100.WK.18	HSK100A	18	50	100	•
HSK100A.100.WK.20	HSK100A	20	52	100	•
HSK100A.100.WK.25	HSK100A	25	65	100	•
HSK100A.100.WK.32	HSK100A	32	72	100	•
HSK100A.105.WK.40	HSK100A	40	80	105	•

od průměr d = 25 se dvěma upínacími šrouby

d = 6 až 18 se dvěma chladicími kanály

d = 20 až 40 se čtyřmi chladicími kanály

from d = 25 on two clamping screws

d = 6 to 18 with two coolant channels

d = 20 to 40 with four coolant channels